

STARTER KIT

Technical specifications



Technology: UWB IEEE 802.15.4-2011

Operating Frequency: 3.5 to 6.5 GHz

Bandwidth: 500 MHz (4 channels) or 900 MHz (2 channels)

Data rate: 110 kbps, 850 kbps or 6.8 Mbps

Range: wide area coverage, up to 5,000 m²

Refresh rate: in the order of 100 positions per second

Communication: UART or USB

DC characteristics: 5 V -100 mA (typ.)

Starter kit for accurate geolocation

Kit content

- 1 tag
- 4 anchors
- 4 Micro USB to USB A cables
- 4 mini tripods
- Batteries not included

Software

- *RTLS by IIDRE* - Companion software for real-time data monitoring and infrastructure management
- Cross-platform (Microsoft Windows 7 to 10 and Linux)

Support

- Detailed documentation:
 - Quick-start Guide
 - UWB devices User Guide
 - Companion software User Guide
- Personal support to help you get started

Mechanical characteristics

- Tag:
 - 50x23x15 mm
 - 15 g
- Anchors:
 - 85x55x20 mm
 - 56 g
 - Built-in nut (1/2")

Key features

- Easy to use
- Indoor/outdoor use
- Accurate geolocation
- Extendable area thanks to great scalability offered by the adaptative numbers of anchors
- Over-the-air-configuration
- Embedded 9-axis absolute orientation sensor

How does it work?

Install and georeference the infrastructure

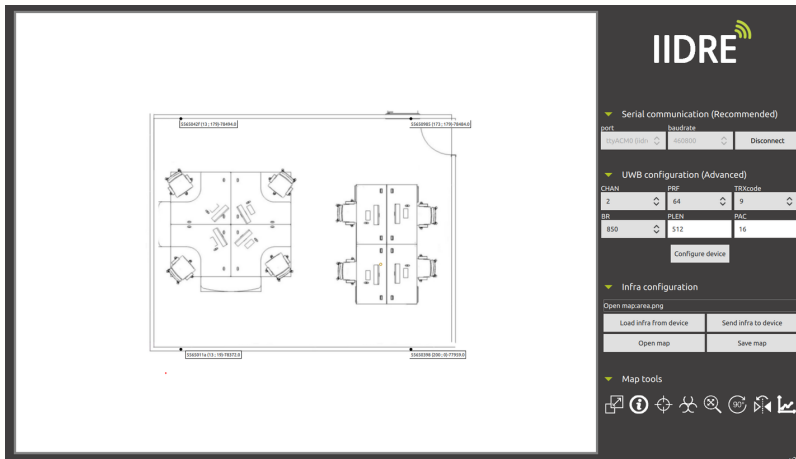


ToF measurements via UWB messages

Positions of the tag computed via multilateration process

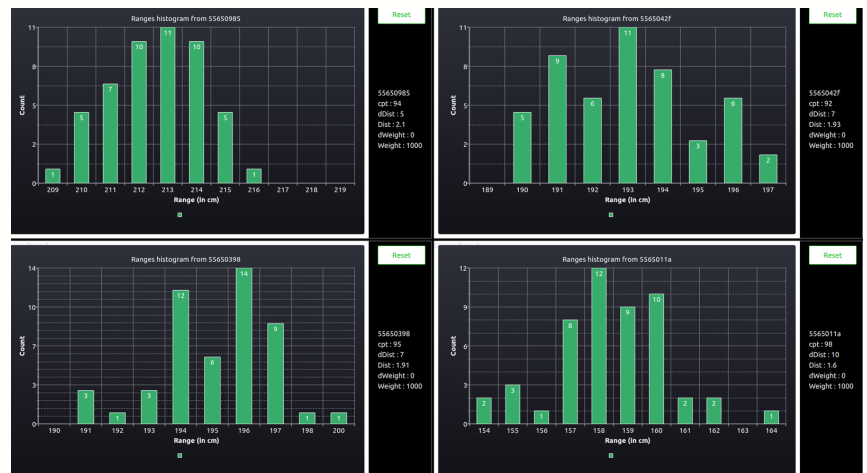


Positions monitoring in real-time



Cross-platform application for real-time data visualization and data logging which offers unlimited post-processing possibilities. User friendly interface for infrastructure management and for tunable UWB parameters.

Monitor the infrastructure at a glance thanks to real-time plots and metrics.



For which type of customers?

Industry



Logistics



Automotive



Robotics



UAV



Sports



Hobbyists



25 rue Marcel Issartier, 33700 Mérignac, FRANCE

Tel: +33 (0) 972 278 873

contact@iidre.com

www.iidre.com